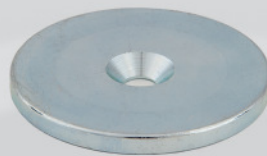


# ATS Tracker SMR Adapter

*a vital part of Traceable 3D®*

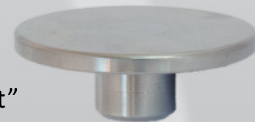
Traceable 3D quality assures your project over time by establishing repeatable benchmarks that efficiently support data capturing and analysis of 3D point clouds in a traceable and reusable process



20 Precision washers



3 Tracker prism adapter

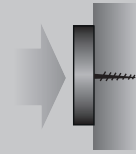
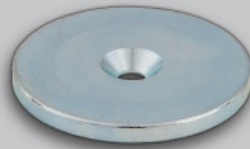


3 Adapter "washer to shaft"

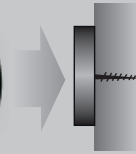


## Workflow ATS Scan Reference System

**1** Mount precision washers where the references should be placed, walls, ceilings etc.



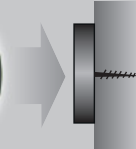
**2** Attach references (large or medium) to the washer, magnetic connection



Scan!

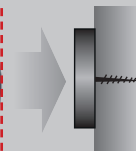
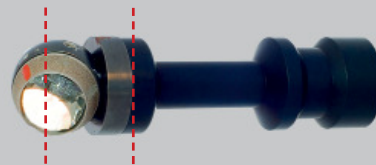
Remove the scan references

**3** Attach prisms, magnetic connection



Survey!

**4** Attach SMR adaptor  
Connect to Laser tracker data



### ATS Tracker SMR Adapter • Technical Data

SMR nest shaft diameter	6, 10 or 12 mm
SMR centre offset from adapter	25 mm
Nominal offset height	137 mm
Absolute accuracy: $\Delta x$ , $\Delta y$ , $\Delta z$	$\pm 1$ mm
Mounts to	Precision washer $\varnothing$ 36 mm
Type of mount	Magnetic
References in one case	3
Outer dimensions for case	300 x 275 x 82 mm



ATS Advanced Technical Solutions AB  
Krokslättsgatan 7  
SE-431 67 Mölndal  
SWEDEN

Phone +46 (0)31 20 96 16  
[www.ats.se](http://www.ats.se)