

# ATS Starter kit

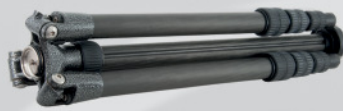
*a vital part of Traceable 3D®*

Traceable 3D quality assures your project over time by establishing repeatable benchmarks that efficiently support data capturing and analysis of 3D point clouds in a traceable and reusable process

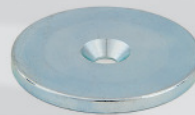
3 Mini tripod  
for references



1 Light weight  
tripod for scanner



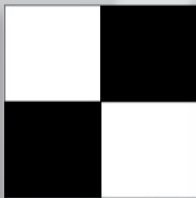
20 Precision  
washers



1 Prism  
adapter



12 Flat  
targets



3 Medium  
references

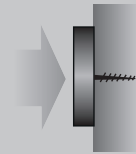
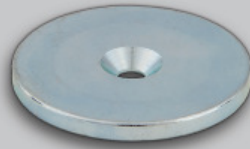


Lightweight  
case

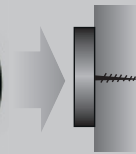


## Workflow ATS Scan Reference System

**1** Mount precision washers where the references should be placed, walls, ceilings etc.



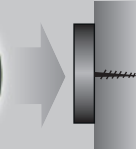
**2** Attach references (large or medium) to the washer, magnetic connection



Scan!

Remove the scan references

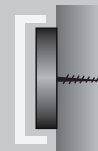
**3** Attach prisms, magnetic connection



Survey!

Remove prisms

**4** Protect the precision washer



### ATS Starter kit • Technical Data

Nominal sphere diameter	139 mm
Nominal offset height from washer	137 mm
Absolute accuracy for Medium ref. $\Delta x$ , $\Delta y$ , $\Delta z$	$\pm 1$ mm
Medium ref. mounts to	Precision washer $\varnothing 36$ mm
Type of mount	Magnetic
Outer dimensions for case	500 x 420 x 175 mm



ATS Advanced Technical Solutions AB  
Krokslättsgatan 7  
SE-431 67 Mölndal  
SWEDEN

Phone +46 (0)31 20 96 16  
[www.ats.se](http://www.ats.se)