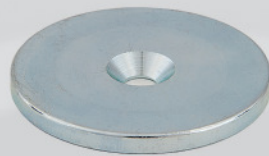


ATS Portable CMM Adapter

a vital part of Traceable 3D®

Traceable 3D quality assures your project over time by establishing repeatable benchmarks that efficiently support data capturing and analysis of 3D point clouds in a traceable and reusable process



20 Precision washers



For 3 mm ball probe
137 mm

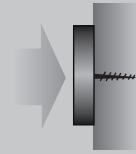
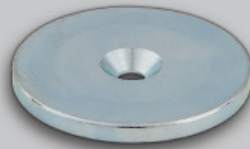


For 6 mm ball probe
137 mm



Workflow ATS Scan Reference System

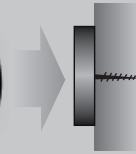
- 1 Mount precision washers where the references should be placed, walls, ceilings etc.



- 2 Attach references (large or medium) to the washer, magnetic connection

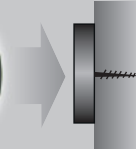
Scan!

Remove the scan references

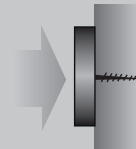
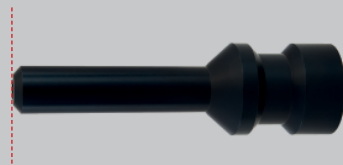


- 3 Attach prisms, magnetic connection

Survey!



- 4 Attach ball probe adaptor
Connect to Portable CMM data



ATS Portable CMM Adapter • Technical Data

Probe diameter (different kits)	3 or 6 mm
Nominal offset height	137 mm
Absolute accuracy: Δx , Δy , Δz	± 1 mm
Mounts to	Precision washer $\varnothing 36$ mm
Type of mount	Magnetic
References in one case	3
Outer dimensions for case	300 x 275 x 82 mm



ATS Advanced Technical Solutions AB
Krokslättsgatan 7
SE-431 67 Mölndal
SWEDEN

Phone +46 (0)31 20 96 16
www.ats.se