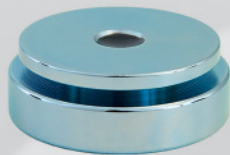


ATS Medium kit

a vital part of Traceable 3D®

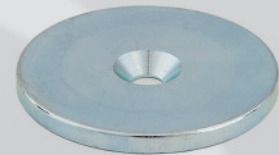
Traceable 3D quality assures your project over time by establishing repeatable benchmarks that efficiently support data capturing and analysis of 3D point clouds in a traceable and reusable process



5 Magnet extenders



5 Mini tripod for references

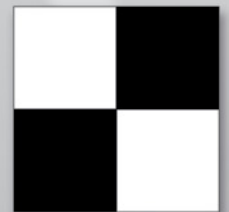


10 Precision washers



5 Medium references

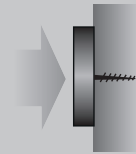
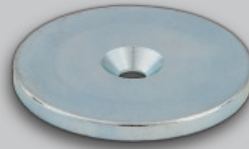
12 Flat targets



Lightweight case

Workflow ATS Scan Reference System

- 1** Mount precision washers where the references should be placed, walls, ceilings etc.



- 2** Attach references to the washer, magnetic connection

Scan!

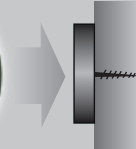
Remove the scan references



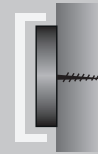
- 3** Attach prisms, magnetic connection

Survey!

Remove prisms



- 4** Protect the precision washer



ATS Medium kit • Technical Data

Nominal sphere diameter	139 mm
Nominal offset height from washer	137 mm
Absolute accuracy for Medium ref. Δx , Δy , Δz	± 1 mm
Medium ref. mounts to	Precision washer $\varnothing 36$ mm
Type of mount (medium ref.)	Magnetic
Outer dimensions for case	500 x 420 x 175 mm

